



1 COCHRANE AVE. PENNSBORO, WV 26415 PH.  
800-426-2249

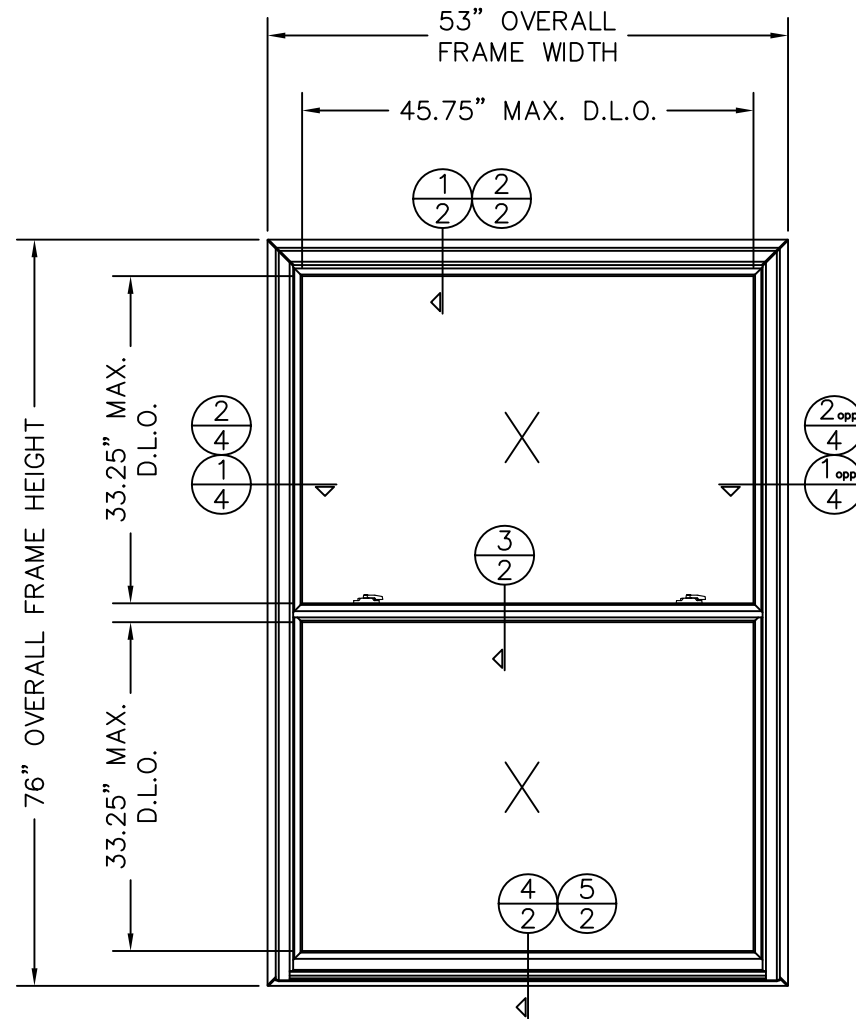
**STORMBREAKER PLUS 300VL  
IMPACT RESISTANT VINYL  
DOUBLE HUNG WINDOW**

ALL MODELS ARE VIEWED FROM THE EXTERIOR

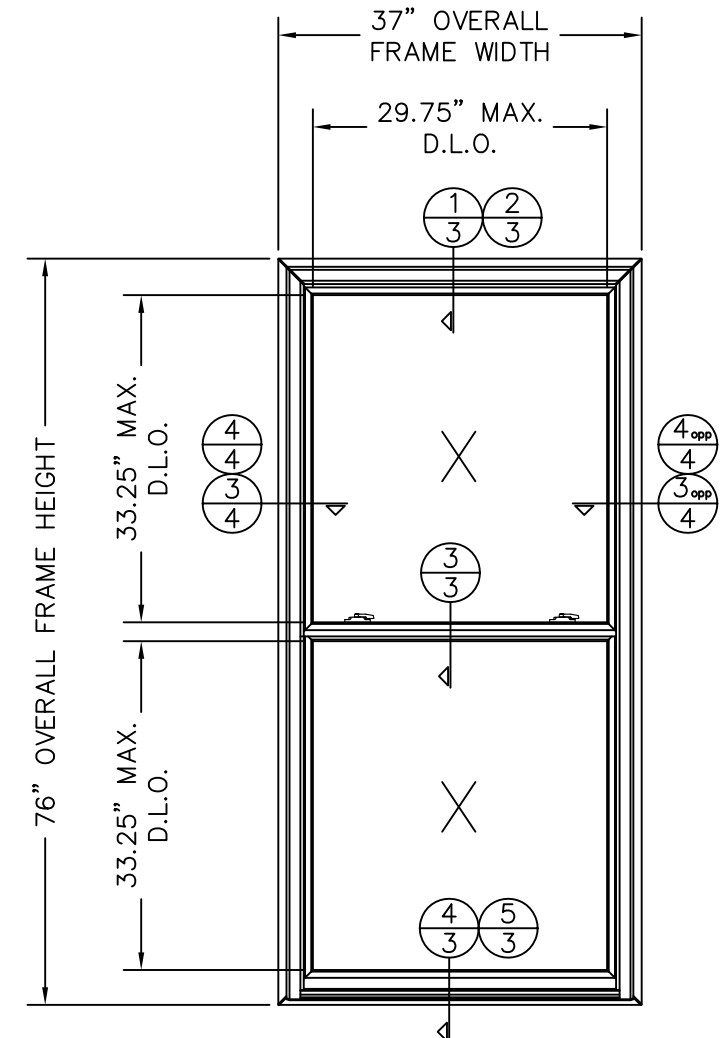
REV. #	REVISIONS:	REVISED BY:	DATE:
1	REVISED ANCHORAGE FOR 5TH ED. 2014 FBC	LAT	4/27/2015
2	UPDATED DP RATING PER NEW TESTING	LMH	4/10/2017
3	UPDATED NOTE 1.	LMH	9/11/2017
4	ADDED SETTING BLOCK REFERENCE TO GLAZING DETAIL, SHEET 2.	LMH	12/12/17
5	UPDATED FOR 7TH ED. (2020) FBC	LMH	11/09/20

**GENERAL NOTES:**

1. THIS PRODUCT HAS BEEN DESIGNED AND TESTED TO COMPLY WITH THE 7TH EDITION (2020) FLORIDA BUILDING CODES, INCLUDING THE HIGH VELOCITY HURRICANE ZONE.
2. BASED ON LABORATORY TESTING, THIS PRODUCT IS COMPLIANT WITH TAS 201/202/203 FOR LARGE MISSILE IMPACT PERFORMANCE. SHUTTERS ARE NOT REQUIRED.
3. GLAZING AS INDICATED HEREIN COMPLIES WITH ASTM E 1300.
4. HIGH QUALITY SILICONE CAULK SHALL BE USED AROUND ENTIRE WINDOW PERIMETER, INSIDE AND OUT, BY INSTALLER.
5. WOOD BUCKS (BY OTHERS) MUST SUSTAIN ALL IMPOSED LOADS. THE CONTRACTOR IS RESPONSIBLE FOR MAINTAINING WINDOW OPENING AND ALL WOOD FRAMING AROUND WINDOW. WOOD BUCKS, BY OTHERS, MUST BE PROPERLY ANCHORED TO TRANSFER LOADS TO THE STRUCTURE AS APPROVED BY THE AUTHORITY HAVING JURISDICTION.
6. SEALING AND FLASHING STRATEGIES FOR OVERALL WATER INFILTRATION RESISTANCE OF INSTALLED PRODUCT ARE THE RESPONSIBILITY OF OTHERS.
7. ALL FASTENERS PENETRATING INTO PRESSURE TREATED WOOD SHALL BE CAPABLE OF PREVENTING CORROSION DUE TO REACTION WITH PRESSURE TREATMENT CHEMICALS. ANY DISSIMILAR MATERIALS THAT COME INTO CONTACT SHALL BE PROTECTED TO PREVENT GALVANIC REACTIONS IN ACCORDANCE WITH CODE REQUIREMENTS.
8. A WINDLOAD DURATION FACTOR Cd = 1.6 WAS USED FOR THE ANALYSIS OF WOOD SCREWS ONLY.

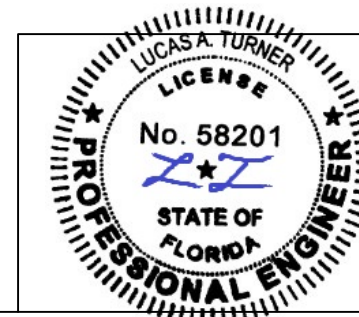


DESIGN PRESSURE RATING	IMPACT RATING
+55 PSF / -60 PSF	LARGE & SMALL MISSILE IMPACT



DESIGN PRESSURE RATING	IMPACT RATING
+65 PSF / -70 PSF	LARGE & SMALL MISSILE IMPACT

TABLE OF CONTENTS	
SHEET #	DESCRIPTION
1	GENERAL NOTES & TYPICAL ELEVATIONS
2	53" X 76" VERTICAL CROSS SECTIONS
3	37" X 76" VERTICAL CROSS SECTIONS
4	HORIZONTAL CROSS SECTIONS & GLAZING DETAILS
5	ANCHORING LOCATIONS
6	COMPONENTS & BILL OF MATERIALS
7	COMPONENTS (CONTINUED)

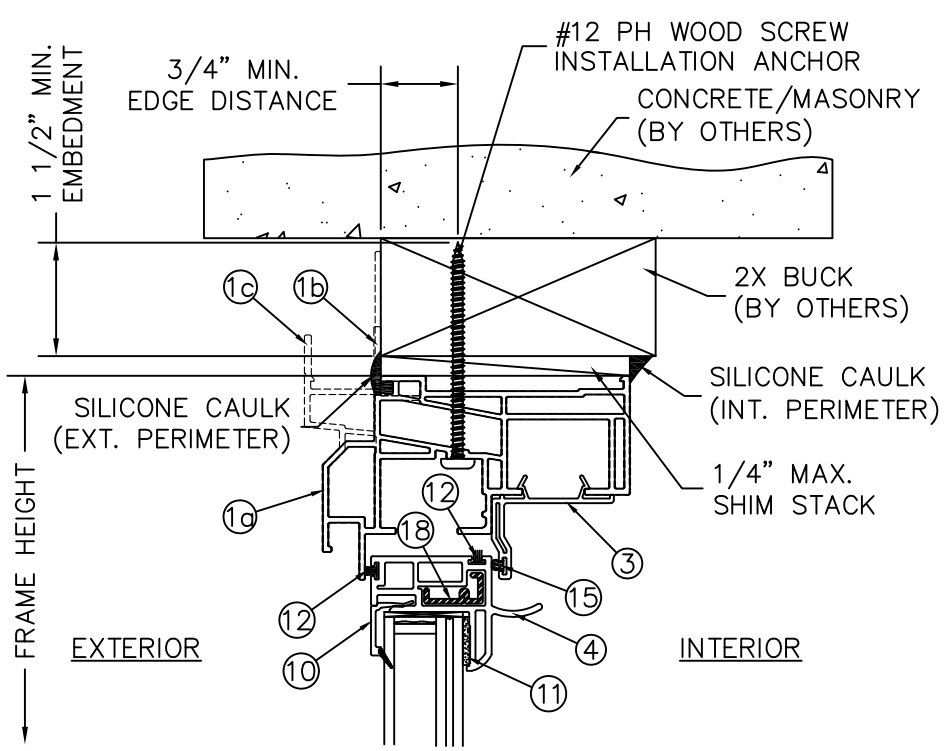


11/09/2020  
LUCAS A. TURNER, P.E.  
FL PE # 58201  
TURNER ENGINEERING & CONSULTING, INC.  
(COA # 29779)  
2428 OLD NATCHEZ TRACE TRAIL, CAMDEN, TN 38320  
PH. 941-380-1574

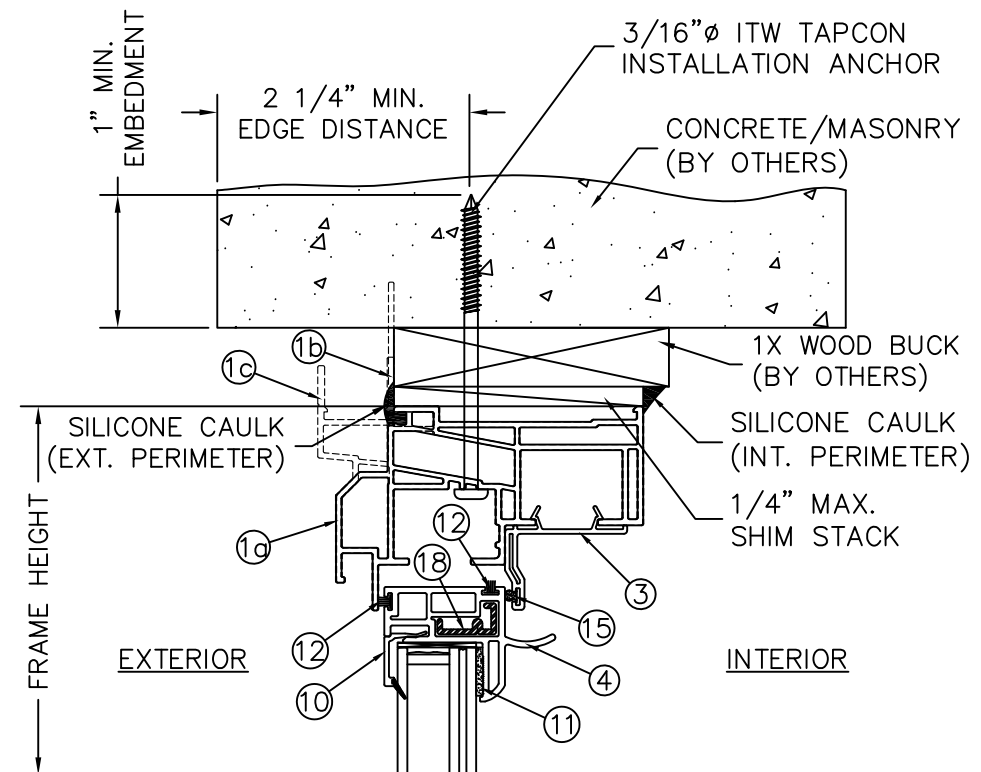


SIZE: DRAWING NO.: B DA0011	REV.: 5
DRAWN BY: T.D.D.	DATE: 05/10/13
CHECKED BY:	DATE:
SCALE: FIT	SHEET: 1 of 7
APPR'VD BY: DATE:	
SERIES: STORMBREAKER PLUS 300VL DH (WITH ALT. FRAMES)	
TITLE: GENERAL NOTES & TYPICAL ELEVATIONS	

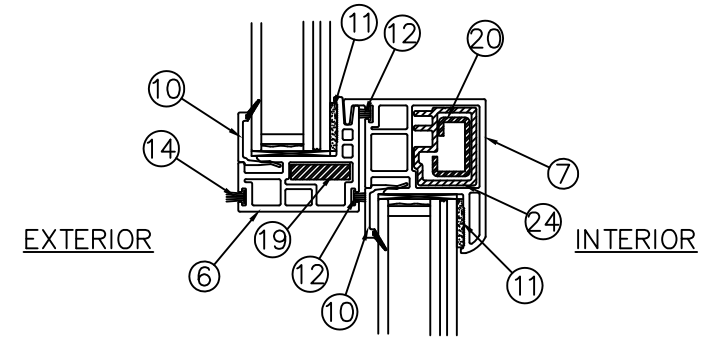
REV. #	REVISIONS:	REVISED BY:	DATE:
1	REVISED ANCHORAGE FOR 5TH ED. 2014 FBC	LAT	4/27/2015
2	UPDATED DP RATING PER NEW TESTING	LMH	4/10/2017
3	UPDATED NOTE 1.	LMH	9/11/2017
4	ADDED SETTING BLOCK REFERENCE TO GLAZING DETAIL, SHEET 2.	LMH	12/12/17
5	UPDATED FOR 7TH ED. (2020) FBC	LMH	11/09/20



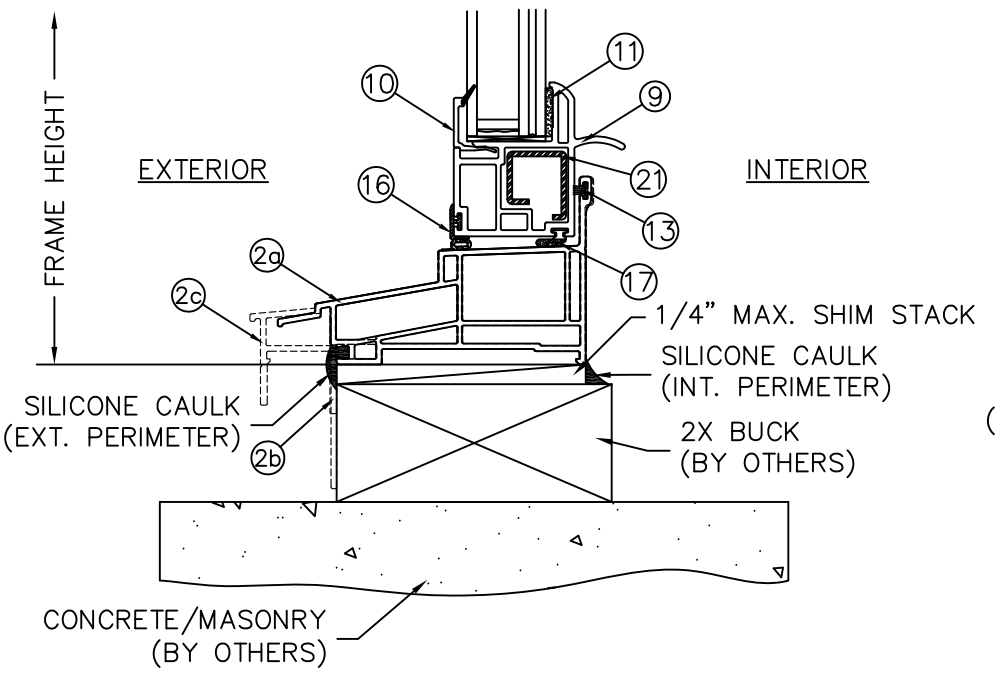
1 VERTICAL CROSS SECTION  
2 53" X 76" HEAD (2X BUCK)  
STEEL REINFORCEMENT



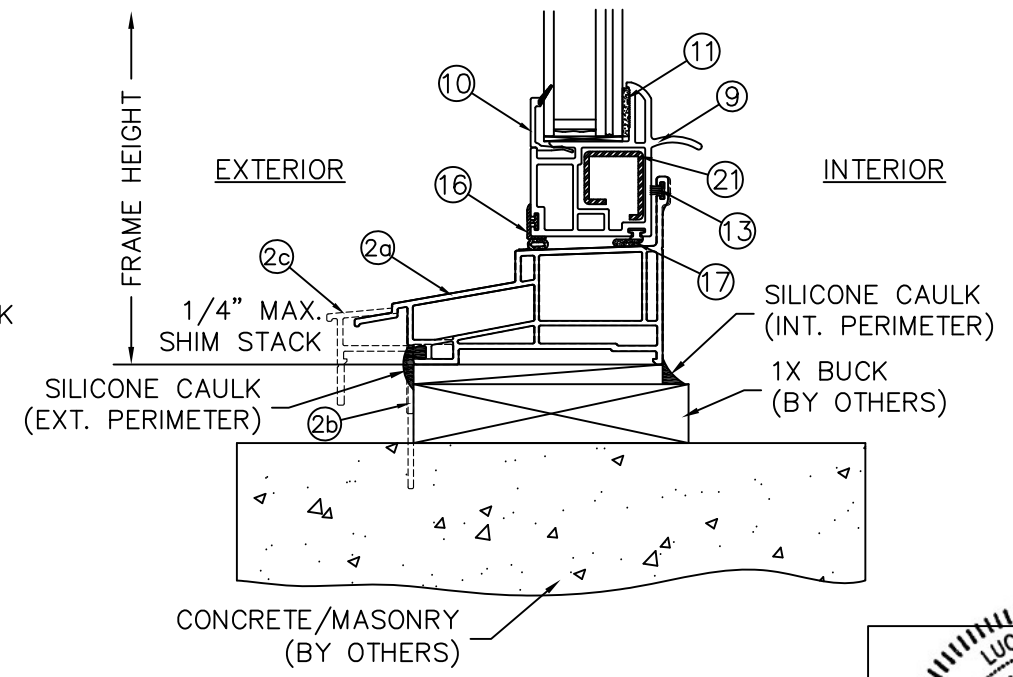
2 VERTICAL CROSS SECTION  
2 53" X 76" HEAD (1X BUCK)  
STEEL REINFORCEMENT



3 VERTICAL CROSS SECTION  
2 53" X 76" MEETING RAIL  
STEEL REINFORCEMENT

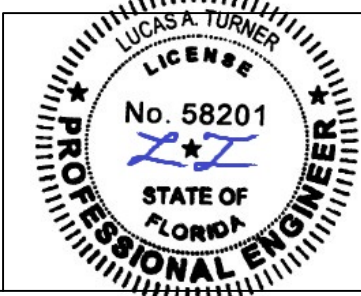


4 VERTICAL CROSS SECTION  
2 53" X 76" SILL (2X BUCK)  
STEEL REINFORCEMENT



5 VERTICAL CROSS SECTION  
2 53" X 76" SILL (1X BUCK)  
STEEL REINFORCEMENT

- NOTES:
- SHIMS SHALL BE A "RIGID/STIFF" MATERIAL, PLASTIC OR METAL. SHIMS MUST BE USED WHEN GAP OF GREATER THAN 1/16" BETWEEN FRAME AND OPENING IS PRESENT AT THE ANCHOR LOCATION. MAX. SHIM STACK = 1/4".
  - ONLY MIAMI-DADE COUNTY APPROVED CORROSION RESISTANT FASTENERS AND ELCO ULTRACON FASTENERS SHALL BE USED. WINDOW INSTALLERS SHALL FOLLOW ALL MANUFACTURER'S INSTRUCTIONS.
  - WOOD SHALL BE SOUTHERN PIN MIN. WITH G=0.55 MIN. MASONRY SHALL BE 2 KSI MIN. CONCRETE OR ASTM C90 CMU WITH 117 PCF MIN.

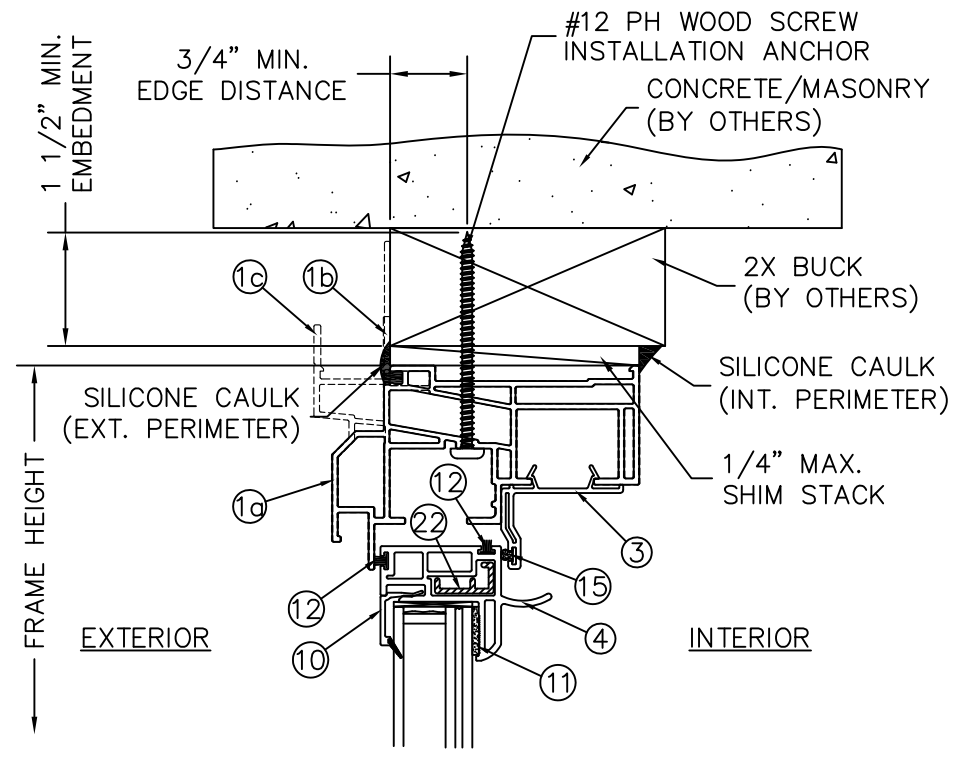


11/09/2020  
LUCAS A. TURNER, P.E.  
FL PE # 58201  
TURNER ENGINEERING &  
CONSULTING, INC.  
(COA # 29779)  
2428 OLD NATCHEZ TRACE  
TRAIL, CAMDEN, TN 38320  
PH. 941-380-1574

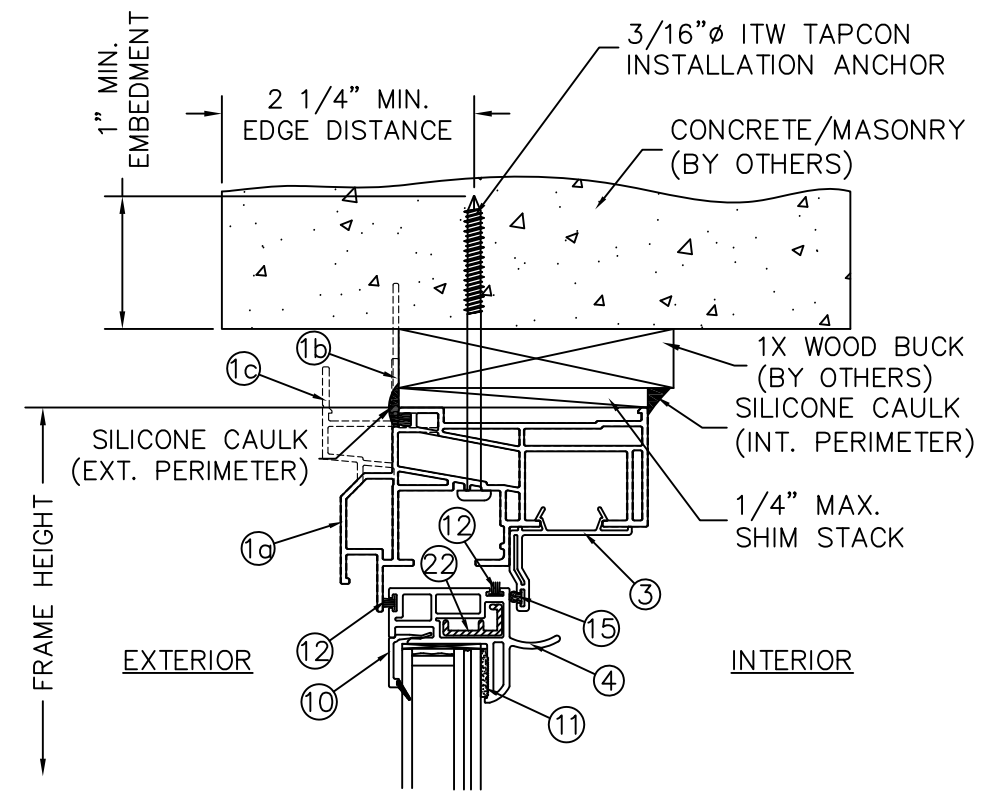
**SIMONTON**  
WINDOWS  
1 Cochrane Avenue  
Pennsboro, WV 26415

SIZE: B	DRAWING NO.: DA0011	REV.: 5
DRAWN BY: T.D.D.	DATE: 05/10/13	CHECKED BY: DATE:
SCALE: FIT	SHEET: 2 of 7	APPR'VD BY: DATE:
SERIES: STORMBREAKER PLUS 300VL DH (WITH ALT. FRAMES)		
TITLE: VERTICAL CROSS SECTIONS (53" X 76" STEEL REINF.)		

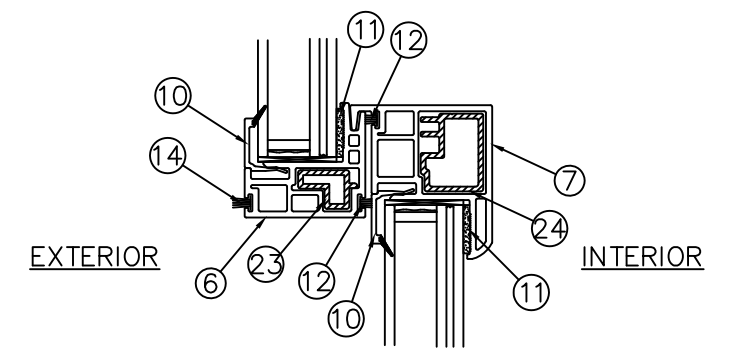
REV. #	REVISIONS:	REVISED BY:	DATE:
1	REVISED ANCHORAGE FOR 5TH ED. 2014 FBC	LAT	4/27/2015
2	UPDATED DP RATING PER NEW TESTING	LMH	4/10/2017
3	UPDATED NOTE 1.	LMH	9/11/2017
4	ADDED SETTING BLOCK REFERENCE TO GLAZING DETAIL, SHEET 2.	LMH	12/12/17
5	UPDATED FOR 7TH ED. (2020) FBC	LMH	11/09/20



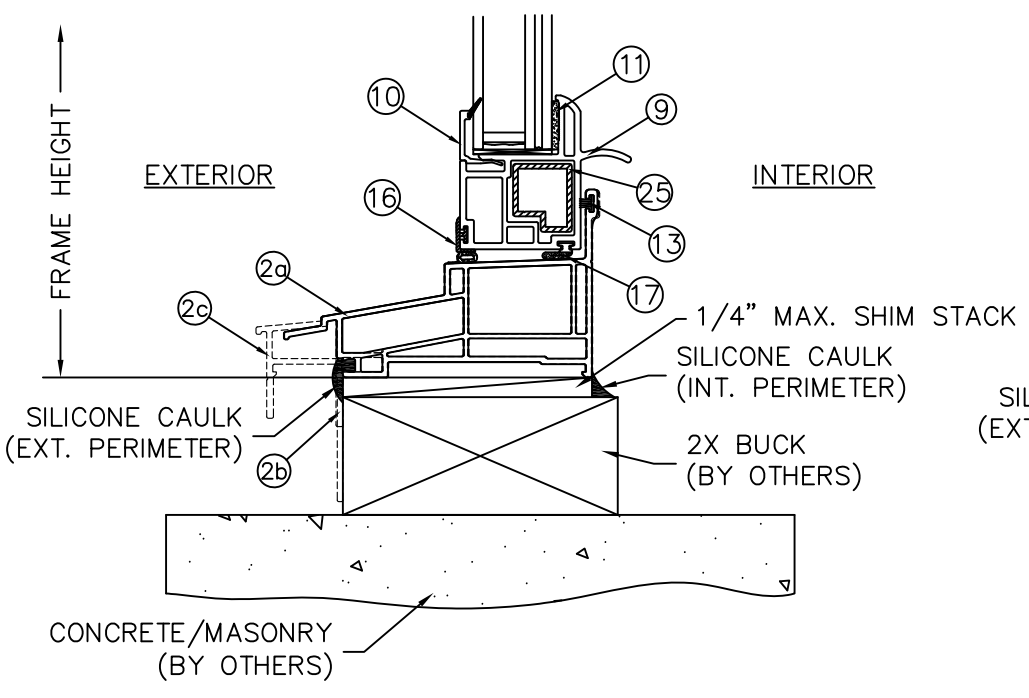
1  
3  
VERTICAL CROSS SECTION  
37" X 76" HEAD (2X BUCK)  
ALUMINUM REINFORCEMENT



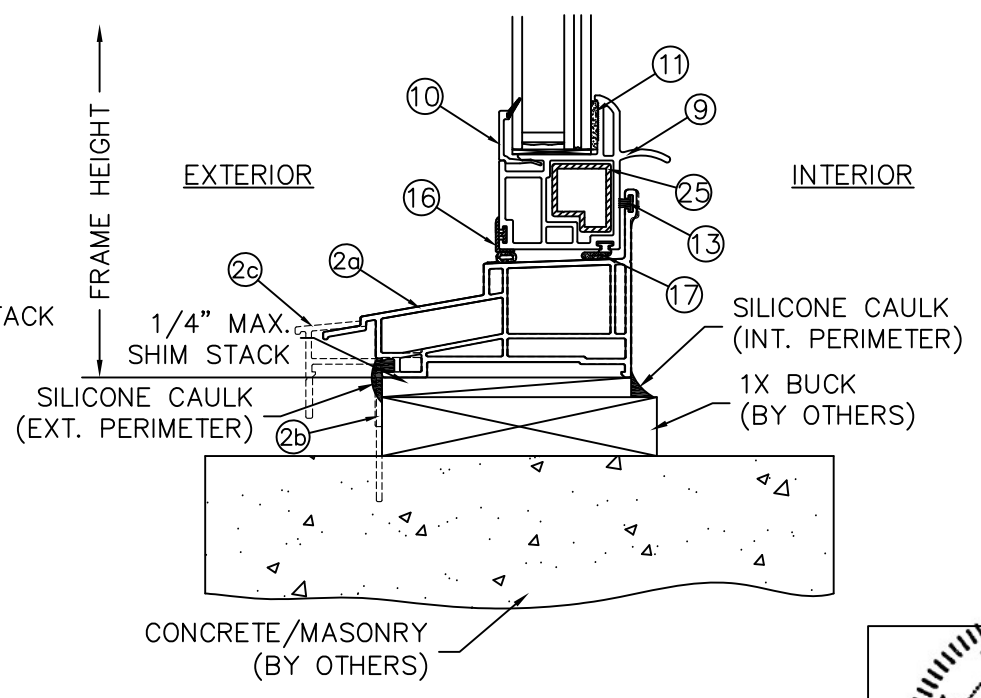
2  
3  
VERTICAL CROSS SECTION  
37" X 76" HEAD (1X BUCK)  
ALUMINUM REINFORCEMENT



3  
3  
VERTICAL CROSS SECTION  
37" X 76" MEETING RAIL  
ALUMINUM REINFORCEMENT



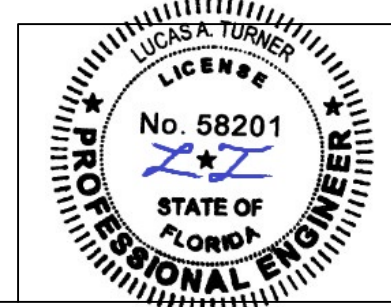
4  
3  
VERTICAL CROSS SECTION  
37" X 76" SILL (2X BUCK)  
ALUMINUM REINFORCEMENT



5  
3  
VERTICAL CROSS SECTION  
37" X 76" SILL (1X BUCK)  
ALUMINUM REINFORCEMENT

**NOTES:**

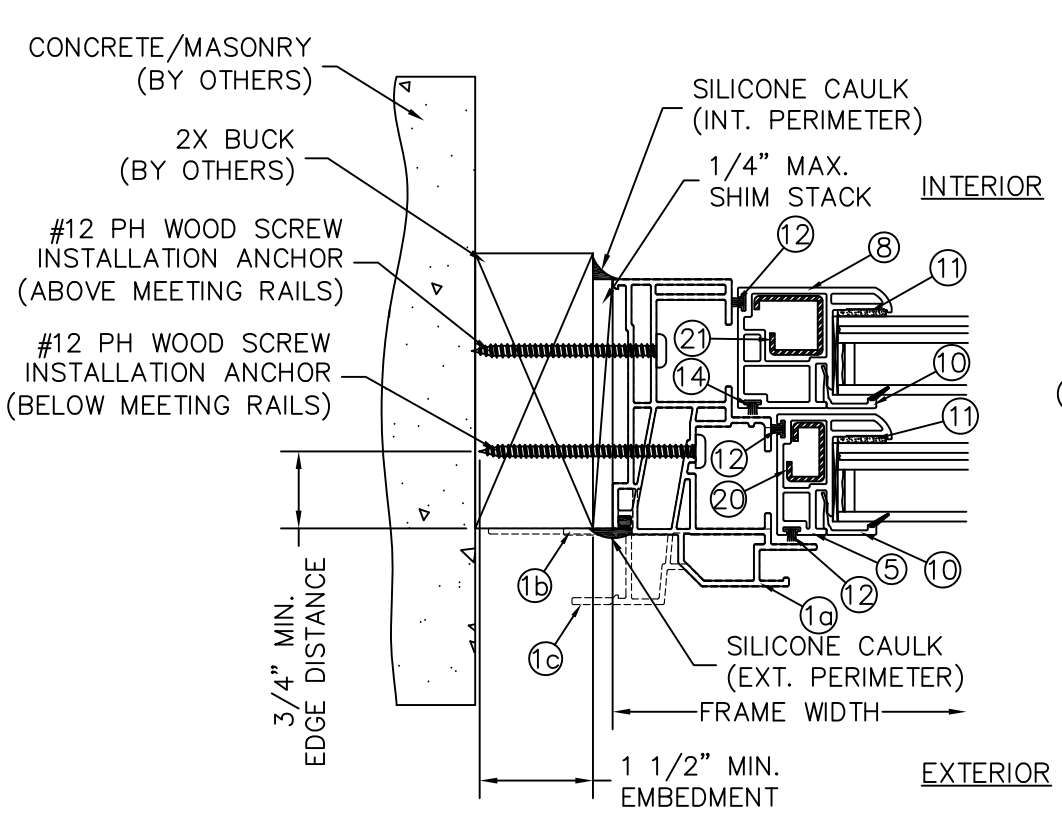
- SHIMS SHALL BE A "RIGID/STIFF" MATERIAL, PLASTIC OR METAL. SHIMS MUST BE USED WHEN GAP OF GREATER THAN 1/16" BETWEEN FRAME AND OPENING IS PRESENT AT THE ANCHOR LOCATION. MAX. SHIM STACK = 1/4".
- ONLY MIAMI-DADE COUNTY APPROVED CORROSION RESISTANT FASTENERS AND ELCO ULTRACON FASTENERS SHALL BE USED. WINDOW INSTALLERS SHALL FOLLOW ALL MANUFACTURER'S INSTRUCTIONS.
- WOOD SHALL BE SOUTHERN PIN MIN. WITH G=0.55 MIN. MASONRY SHALL BE 2 KSI MIN. CONCRETE OR ASTM C90 CMU WITH 117 PCF MIN.



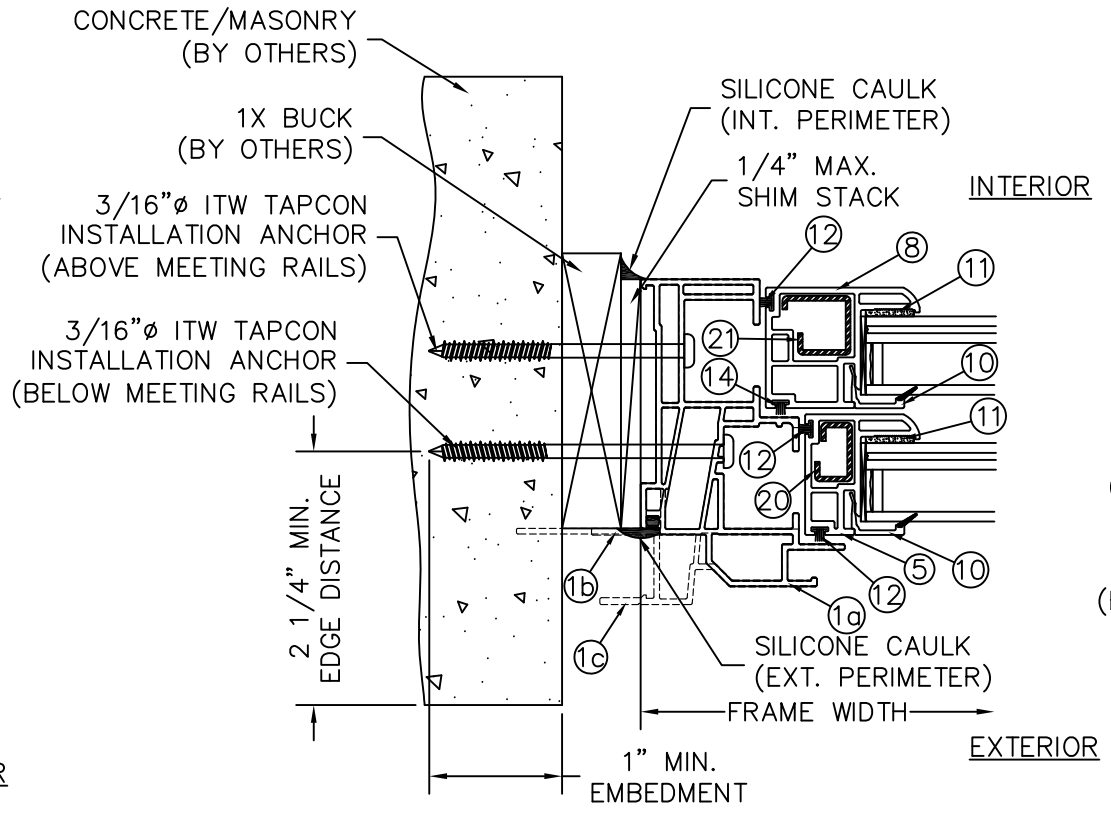
11/09/2020  
LUCAS A. TURNER, P.E.  
FL PE # 58201  
TURNER ENGINEERING &  
CONSULTING, INC.  
(COA # 29779)  
2428 OLD NATCHEZ TRACE  
TRAIL, CAMDEN, TN 38320  
PH. 941-380-1574

<p>1 Cochrane Avenue Pennsboro, WV 26415</p>	SIZE: B DRAWING NO.: DA0011 DRAWN BY: T.D.D. CHECKED BY:	REV.: 5 DATE: 05/10/13
	SCALE: FIT SHEET: 3 of 7	APPR'VD BY:
SERIES: STORMBREAKER PLUS 300VL DH (WITH ALT. FRAMES)		
TITLE: VERTICAL CROSS SECTIONS (37" X 76" ALUM. REINF.)		

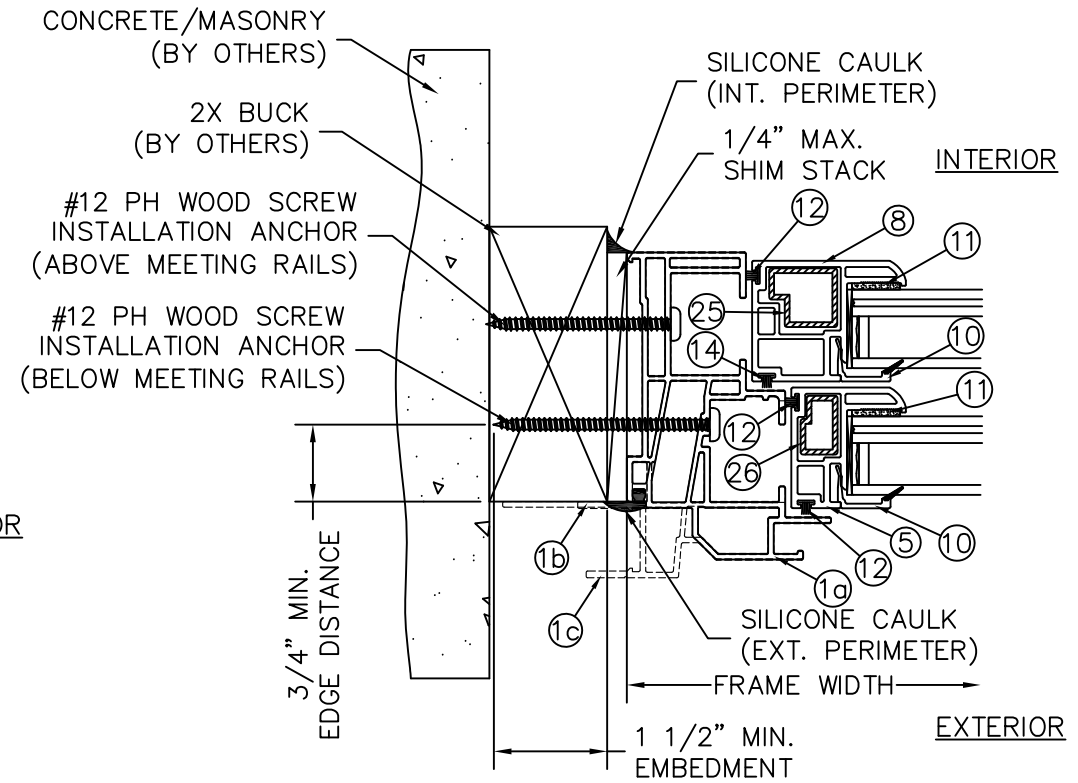
REV. #	REVISIONS:	REVISED BY:	DATE:
1	REVISED ANCHORAGE FOR 5TH ED. 2014 FBC	LAT	4/27/2015
2	UPDATED DP RATING PER NEW TESTING	LMH	4/10/2017
3	UPDATED NOTE 1.	LMH	9/11/2017
4	ADDED SETTING BLOCK REFERENCE TO GLAZING DETAIL, SHEET 2.	LMH	12/12/17
5	UPDATED FOR 7TH ED. (2020) FBC	LMH	11/09/20



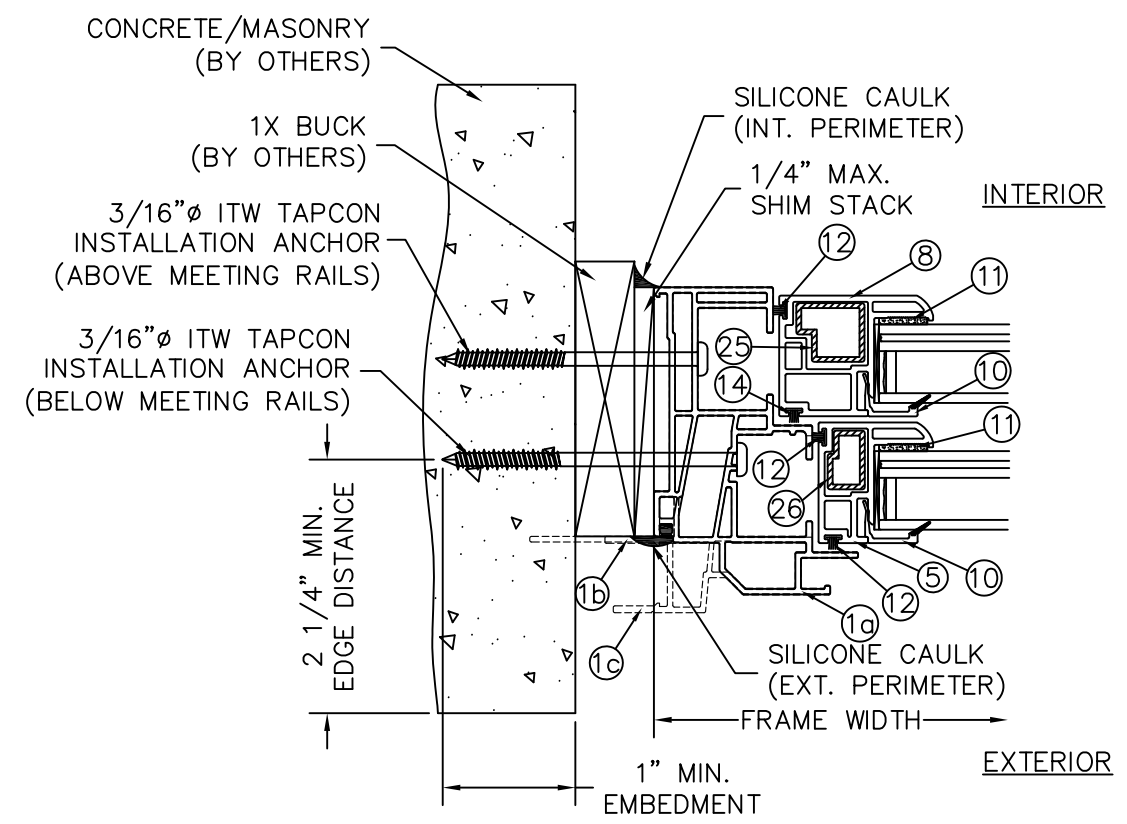
① HORIZONTAL CROSS SECTION  
④ 53" X 76" JAMB (2X BUCK)  
STEEL REINFORCEMENT



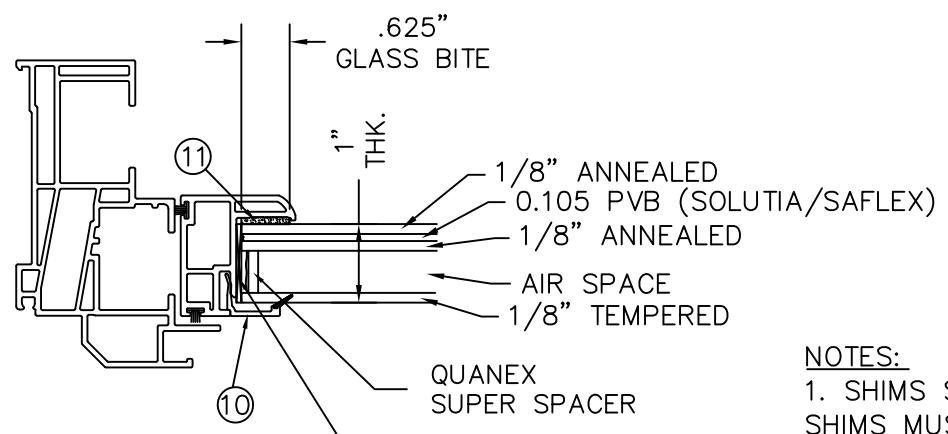
② HORIZONTAL CROSS SECTION  
④ 53" X 76" JAMB (1X BUCK)  
STEEL REINFORCEMENT



③ HORIZONTAL CROSS SECTION  
④ 37" X 76" JAMB (2X BUCK)  
ALUMINUM REINFORCEMENT



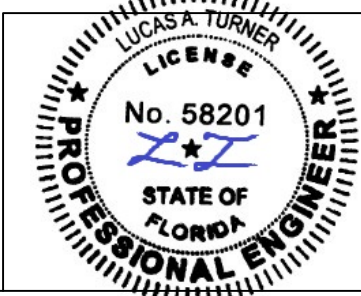
④ HORIZONTAL CROSS SECTION  
④ 37" X 76" JAMB (1X BUCK)  
ALUMINUM REINFORCEMENT



GLAZING DETAIL  
WITH SOLUTIA/SAFLEX LAMINATE

**NOTES:**

- SHIMS SHALL BE A "RIGID/STIFF" MATERIAL, PLASTIC OR METAL. SHIMS MUST BE USED WHEN GAP OF GREATER THAN 1/16" BETWEEN FRAME AND OPENING IS PRESENT AT THE ANCHOR LOCATION. MAX. SHIM STACK = 1/4".
- ONLY MIAMI-DADE COUNTY APPROVED CORROSION RESISTANT FASTENERS AND ELCO ULTRACON FASTENERS SHALL BE USED. WINDOW INSTALLERS SHALL FOLLOW ALL MANUFACTURER'S INSTRUCTIONS.
- WOOD SHALL BE SOUTHERN PIN MIN. WITH G=0.55 MIN. MASONRY SHALL BE 2 KSI MIN. CONCRETE OR ASTM C90 CMU WITH 117 PCF MIN.



11/09/2020  
LUCAS A. TURNER, P.E.  
FL PE # 58201  
TURNER ENGINEERING &  
CONSULTING, INC.  
(COA # 29779)  
2428 OLD NATCHEZ TRACE  
TRAIL, CAMDEN, TN 38320  
PH. 941-380-1574

**SIMONTON**  
WINDOWS

1 Cochrane Avenue  
Pennsboro, WV 26415

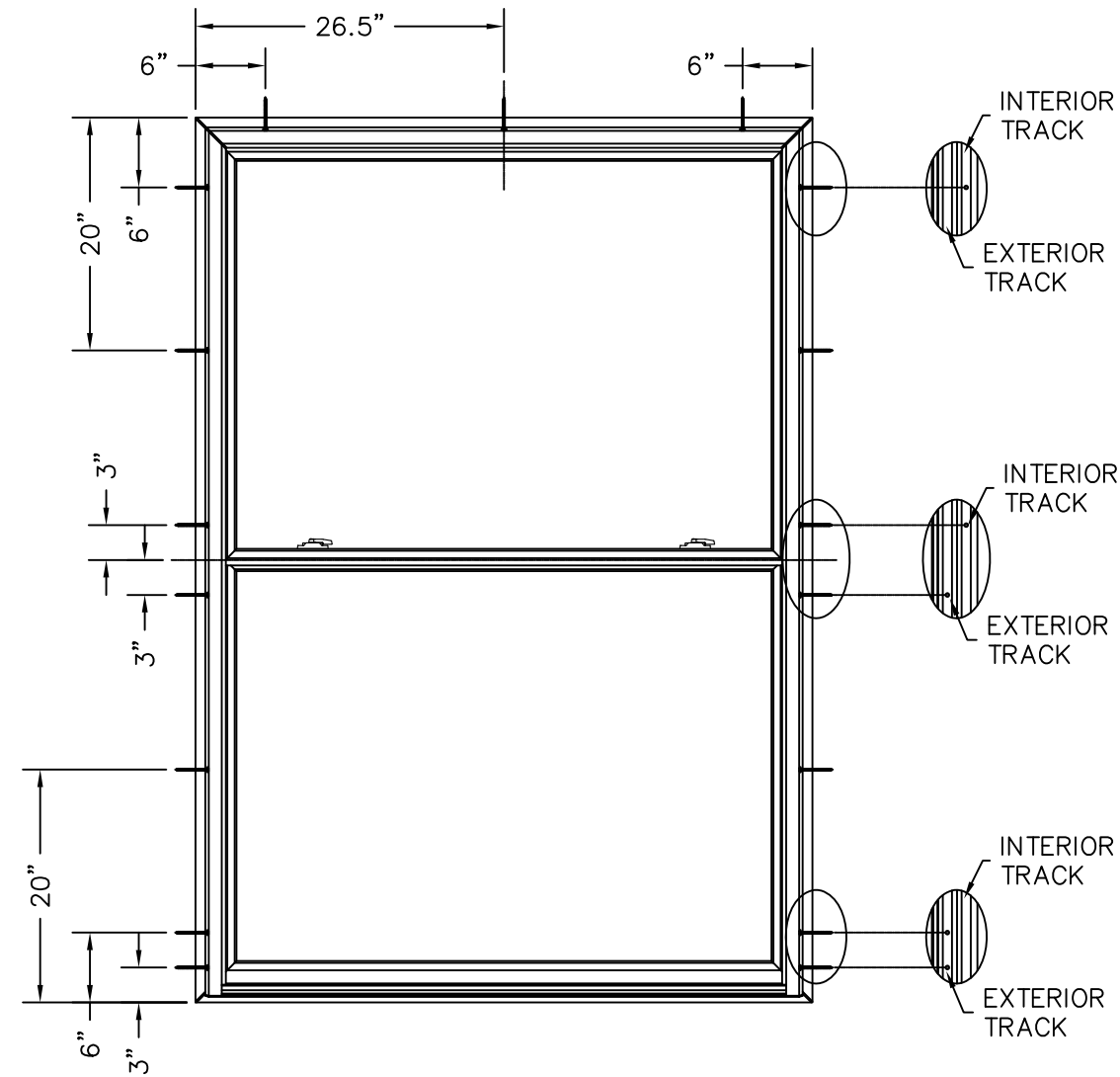
SCALE: FIT SHEET: 4 of 7

SERIES: STORMBREAKER PLUS 300VL DH (WITH ALT. FRAMES)

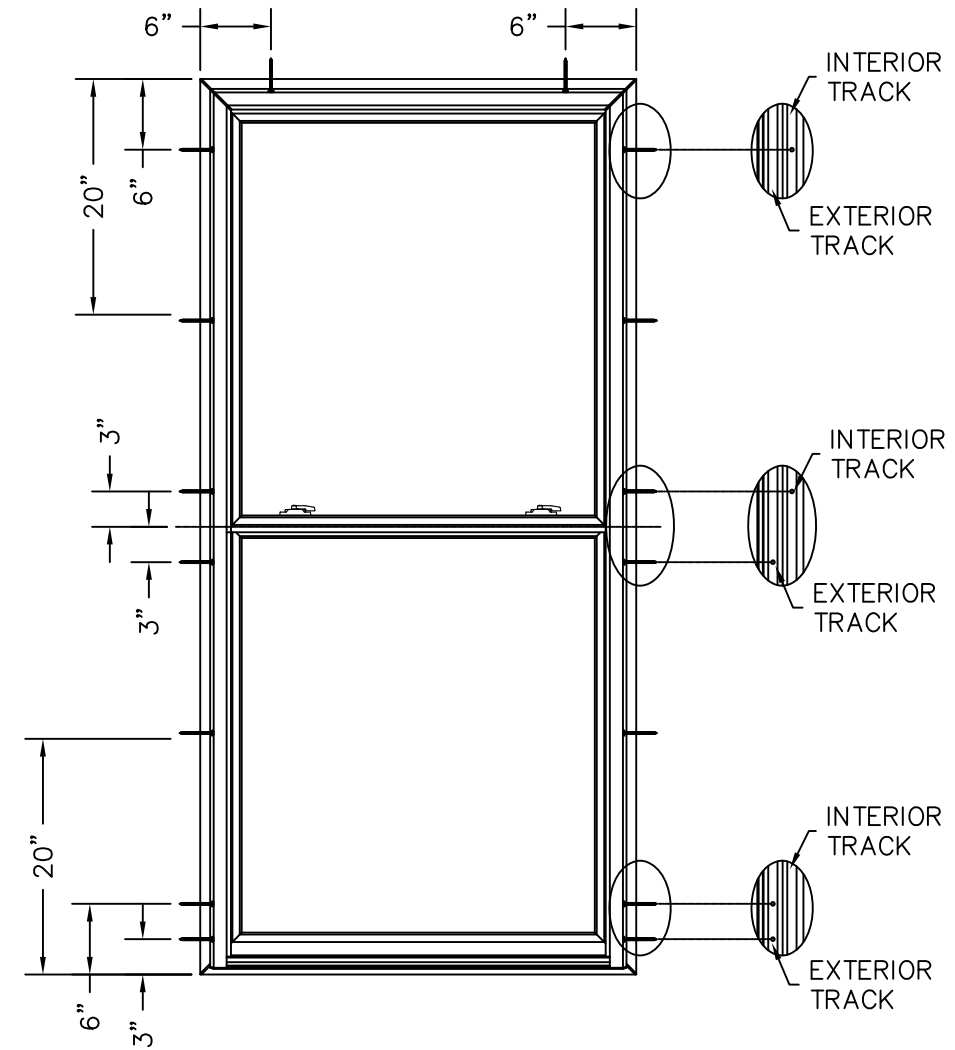
TITLE: HORIZONTAL CROSS SECTIONS

SIZE: DRAWING NO.: B DA0011	REV.: 5
DRAWN BY: T.D.D.	DATE: 05/10/13
CHECKED BY:	DATE:
APPR'VD BY:	DATE:

REV. #	REVISIONS:	REVISED BY:	DATE:
1	REVISED ANCHORAGE FOR 5TH ED. 2014 FBC	LAT	4/27/2015
2	UPDATED DP RATING PER NEW TESTING	LMH	4/10/2017
3	UPDATED NOTE 1.	LMH	9/11/2017
4	ADDED SETTING BLOCK REFERENCE TO GLAZING DETAIL, SHEET 2.	LMH	12/12/17
5	UPDATED FOR 7TH ED. (2020) FBC	LMH	11/09/20



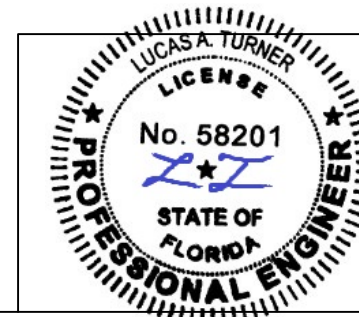
ANCHOR LAYOUT  
53" X 76" DOUBLE HUNG



ANCHOR LAYOUT  
37" X 76" DOUBLE HUNG

**NOTES:**

1. WHEN ANCHORING WINDOW INTO A 2X WOOD BUCK SUBSTRATE, USE #12 WOOD SCREWS OF SUFFICIENT LENGTH TO ACHIEVE A MINIMUM OF 1 1/2" EMBEDMENT INTO THE WOOD.
2. WHEN ANCHORING WINDOW INTO A 1X WOOD BUCK AND MASONRY/CONCRETE, USE 3/16"Ø ITW TAPCON ANCHORS OF SUFFICIENT LENGTH TO ACHIEVE A MINIMUM OF 1 1/4" EMBEDMENT INTO THE MASONRY/CONCRETE.
3. SEE SHEETS 2 THROUGH 4 FOR ADDITIONAL ANCHORAGE DETAILS



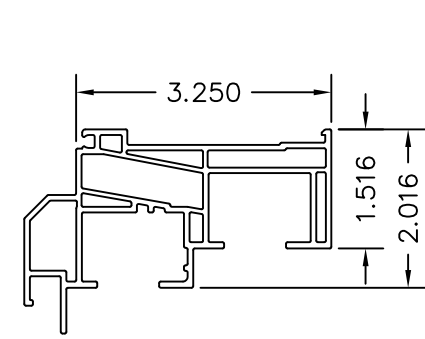
11/09/2020  
LUCAS A. TURNER, P.E.  
FL PE # 58201  
TURNER ENGINEERING &  
CONSULTING, INC.  
(COA # 29779)  
2428 OLD NATCHEZ TRACE  
TRAIL, CAMDEN, TN 38320  
PH. 941-380-1574



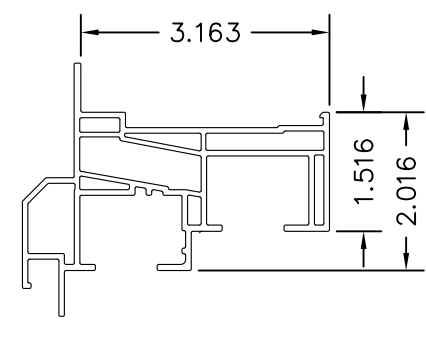
SIZE: DRAWING NO.:	REV.:
B DA0011	5
DRAWN BY:	DATE:
T.D.D.	06/10/09
CHECKED BY:	DATE:
SCALE: FIT	APPR'VD BY: DATE:
SHEET: 5 of 7	
SERIES: STORMBREAKER PLUS 300VL DH (WITH ALT. FRAMES)	
TITLE: ANCHORING LOCATIONS	

BILL OF MATERIALS			
ITEM #	DESCRIPTION	MATERIAL	MANUFACTURER
1a	HEAD / JAMB	VINYL	SIMEX, INC.
1b	ALT. HEAD / JAMB WITH FLANGE	VINYL	SIMEX, INC.
1c	ALT. HEAD / JAMB WITH NAILING FIN & J-CHANNEL	VINYL	SIMEX, INC.
2a	SILL	VINYL	SIMEX, INC.
2b	ALT. SILL WITH FLANGE	VINYL	SIMEX, INC.
2c	ALT. SILL WITH NAILING FIN & J-CHANNEL	VINYL	SIMEX, INC.
3	HEAD INSERT	VINYL	
4	LIFT RAIL (TOP SASH)	VINYL	SIMEX, INC.
5	STILE (TOP SASH)	VINYL	SIMEX, INC.
6	KEEPER RAIL (TOP SASH)	VINYL	SIMEX, INC.
7	LOCK RAIL (BOTTOM SASH)	VINYL	SIMEX, INC.
8	STILE (BOTTOM SASH)	VINYL	SIMEX, INC.
9	LIFT RAIL (BOTTOM SASH)	VINYL	SIMEX, INC.
10	1" GLAZING BEAD	VINYL	
11	896-HIS GLAZING COMPOUND	SILICONE	PECORA
12	0.250 FINSEAL WEATHERSTRIPPING	FOAM	
13	0.210 FINSEAL WEATHERSTRIPPING	FOAM	
14	0.340 FINSEAL WEATHERSTRIPPING	FOAM	
15	32001 FOAM BULB	FOAM	
16	32642 FOAM BULB	FOAM	
17	32341 FOAM BULB	FOAM	
18	DH76 REINFORCEMENT	STEEL	
19	ST-439 REINFORCEMENT BAR	STEEL	
20	DH75 REINFORCEMENT	STEEL	
21	DH78/79 REINFORCEMENT	STEEL	
22	16107 REINFORCEMENT	ALUMINUM	
23	RE0044 REINFORCEMENT	ALUMINUM	
24	60911 REINFORCEMENT	ALUMINUM	
25	56109 REINFORCEMENT	ALUMINUM	
26	56111 REINFORCEMENT	ALUMINUM	

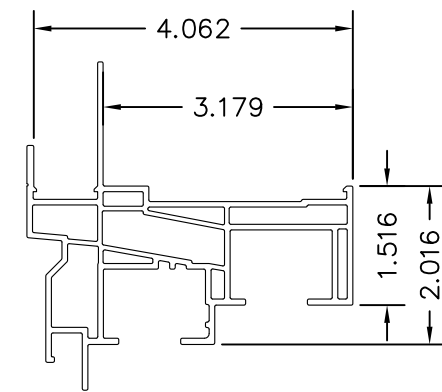
REV. #	REVISIONS:	REVISED BY:	DATE:
1	REVISED ANCHORAGE FOR 5TH ED. 2014 FBC	LAT	4/27/2015
2	UPDATED DP RATING PER NEW TESTING	LMH	4/10/2017
3	UPDATED NOTE 1.	LMH	9/11/2017
4	ADDED SETTING BLOCK REFERENCE TO GLAZING DETAIL, SHEET 2.	LMH	12/12/17
5	UPDATED FOR 7TH ED. (2020) FBC	LMH	11/09/20



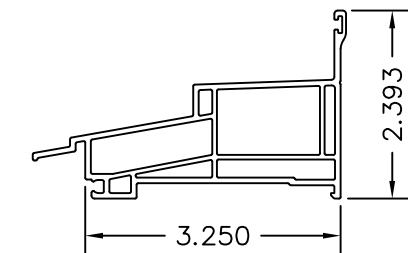
①a HEAD / JAMB  
PART #DH0901S  
0.071" EXT. WALL THK.  
0.059" INT. WALL THK.



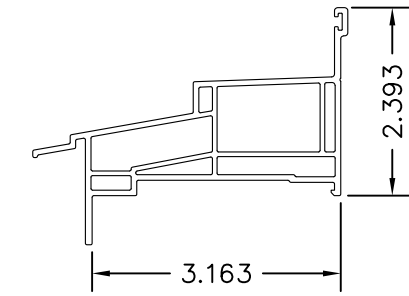
①b HEAD / JAMB WITH FLANGE  
PART #DH1101S  
0.071" EXT. WALL THK.  
0.059" INT. WALL THK.



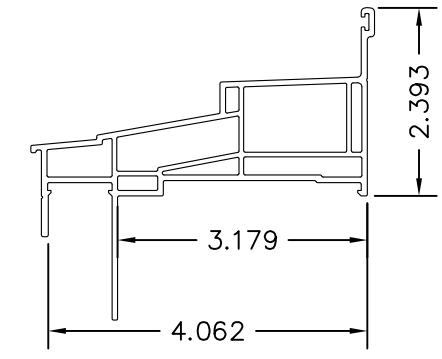
①c HEAD / JAMB WITH NAILING FIN & J-CHANNEL  
PART #DH1201S  
0.071" EXT. WALL THK.  
0.059" INT. WALL THK.



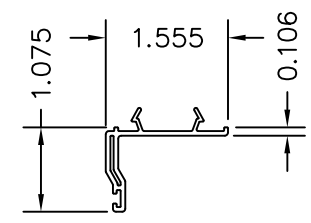
②a SILL  
PART #DH0903S  
0.071" EXT. WALL THK.  
0.059" INT. WALL THK.



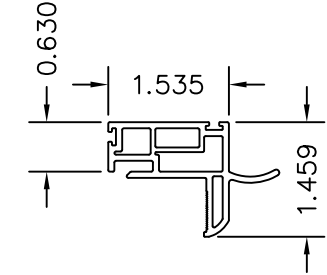
②b SILL WITH FLANGE  
PART #DH1103S  
0.071" EXT. WALL THK.  
0.059" INT. WALL THK.



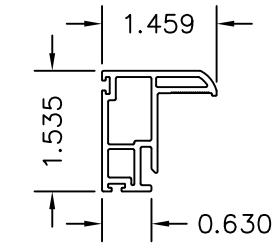
②c SILL WITH NAILING FIN & J-CHANNEL  
PART #DH1203S  
0.071" EXT. WALL THK.  
0.059" INT. WALL THK.



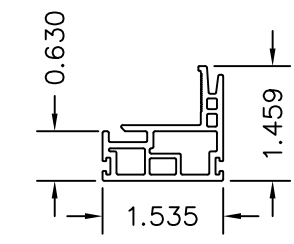
③ HEAD INSERT  
PART #VPI-431  
0.059" WALL THK.



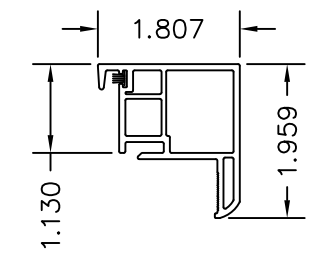
④ LIFT RAIL  
PART #DH76S-1  
0.079" EXT. WALL THK.  
0.059" INT. WALL THK.



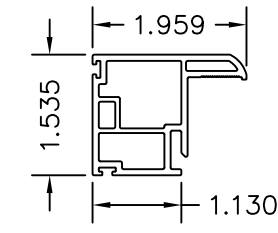
⑤ STILE (TOP)  
PART #DH75S  
0.079" EXT. WALL THK.  
0.059" INT. WALL THK.



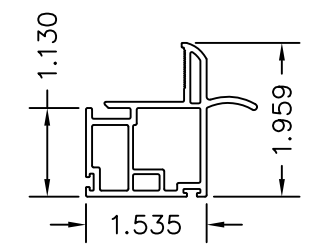
⑥ KEEPER RAIL  
PART #DH74S  
0.079" EXT. WALL THK.  
0.059" INT. WALL THK.



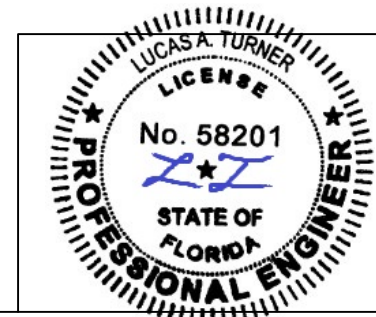
⑦ LOCK RAIL  
PART #DH77S  
0.079" EXT. WALL THK.  
0.059" INT. WALL THK.



⑧ STILE (BOTTOM)  
PART #DH78S  
0.079" EXT. WALL THK.  
0.059" INT. WALL THK.



⑨ LIFT RAIL (BOTTOM)  
PART #DH79S  
0.079" EXT. WALL THK.  
0.059" INT. WALL THK.



11/09/2020  
LUCAS A. TURNER, P.E.  
FL PE # 58201  
TURNER ENGINEERING & CONSULTING, INC.  
(COA # 29779)  
2428 OLD NATCHEZ TRACE TRAIL, CAMDEN, TN 38320  
PH. 941-380-1574

**SIMONTON**  
WINDOWS

1 Cochrane Avenue  
Pennsboro, WV 26415

SIZE: DRAWING NO.: REV.:  
B DA0011 5

DRAWN BY: DATE:  
T.D.D. 05/10/13

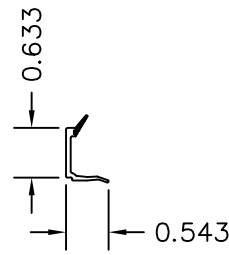
CHECKED BY: DATE:

SCALE: FIT SHEET: 6 of 7 APPR'VD BY: DATE:

SERIES: STORMBREAKER PLUS 300VL DH (WITH ALT. FRAMES)

TITLE: BILL OF MATERIALS & COMPONENTS

REV. #	REVISIONS:	REVISED BY:	DATE:
1	REVISED ANCHORAGE FOR 5TH ED. 2014 FBC	LAT	4/27/2015
2	UPDATED DP RATING PER NEW TESTING	LMH	4/10/2017
3	UPDATED NOTE 1.	LMH	9/11/2017
4	ADDED SETTING BLOCK REFERENCE TO GLAZING DETAIL, SHEET 2.	LMH	12/12/17
5	UPDATED FOR 7TH ED. (2020) FBC	LMH	11/09/20



⑩ 1" GLAZING BEAD  
PART #BV18  
0.059" WALL THK.

⑫ 0.250 FINSEAL  
WEATHERSTRIPPING

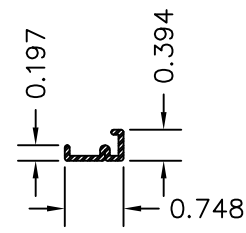
⑬ 0.210 FINSEAL  
WEATHERSTRIPPING

⑭ 0.340 FINSEAL  
WEATHERSTRIPPING

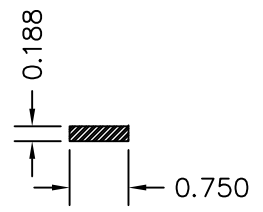
⑮ FOAM BULB  
(HEAD INSERT)  
PART #32001

⑯ FOAM BULB  
(BOTTOM SASH)  
PART #32642

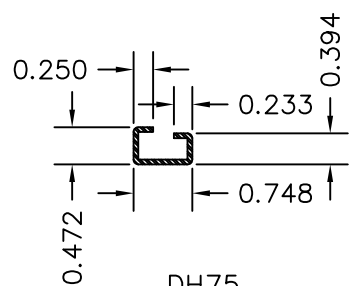
⑰ FOAM BULB  
(BOTTOM SASH)  
PART #32341



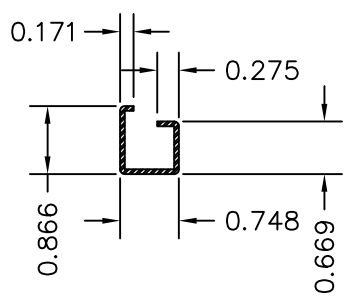
⑱ DH76  
REINFORCEMENT  
16 GA. H.D.  
GALV. G-90



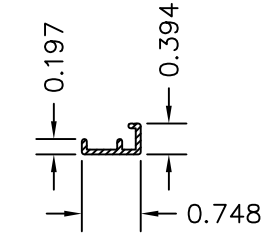
⑲ ST-439  
REINFORCEMENT  
16 GA. H.D.  
GALV. G-90



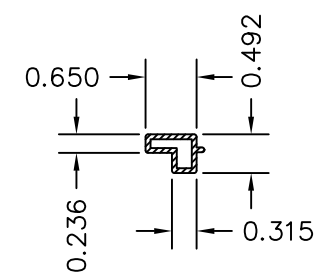
⑳ DH75  
REINFORCEMENT  
16 GA. H.D.  
GALV. G-90



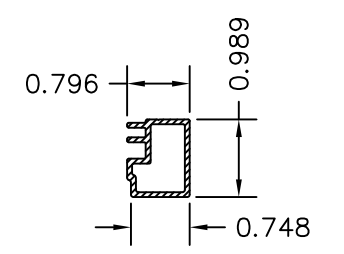
㉑ DH78/79  
REINFORCEMENT  
16 GA. H.D.  
GALV. G-90



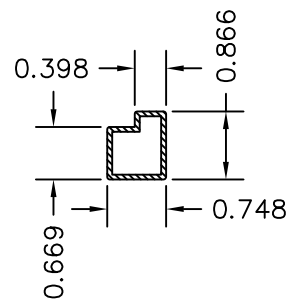
㉒ 16107  
REINFORCEMENT  
ALUM. 6063-T6  
0.062" WALL



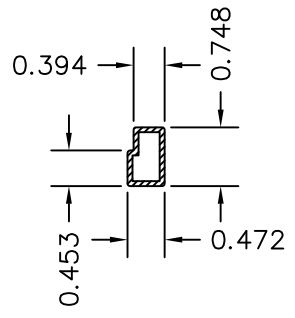
㉓ RE0044  
REINFORCEMENT  
ALUM. 6063-T6  
0.062" WALL



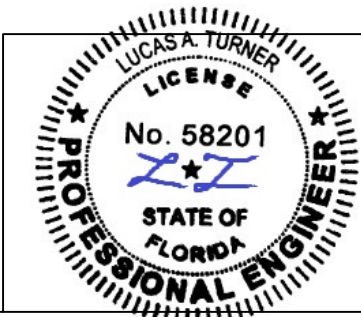
㉔ 60911  
REINFORCEMENT  
ALUM. 6063-T6  
0.062" WALL



㉕ 56109  
REINFORCEMENT  
ALUM. 6063-T6  
0.062" WALL



㉖ 56111  
REINFORCEMENT  
ALUM. 6063-T6  
0.062" WALL



11/09/2020  
LUCAS A. TURNER, P.E.  
FL PE # 58201  
TURNER ENGINEERING &  
CONSULTING, INC.  
(COA # 29779)  
2428 OLD NATCHEZ TRACE  
TRAIL, CAMDEN, TN 38320  
PH. 941-380-1574



SCALE: FIT SHEET: 7 of 7

SIZE: DRAWING NO.: B DA0011	REV.: 5
DRAWN BY: T.D.D.	DATE: 05/10/13
CHECKED BY:	DATE:
APPR'VD BY:	DATE:

SERIES: STORMBREAKER PLUS 300VL DH (WITH ALT. FRAMES)  
TITLE: COMPONENTS (CONTINUED)